

Optimising quality of life for people with non-healing wounds



Authors:
Kevin Woo, Vera Lúcia Conceição de Gouveia Santos, Tarik Alam

Not all wounds have the potential to heal. For patients with such wounds, the focus moves from healing and wound closure to promoting comfort and dignity, relieving suffering and improving quality of life. This article summarises information on the management of non-healing wounds from the literature and advocates a focus on quality of life and inter-professional management based on an individualised plan of care to optimise outcomes for patients.

Some wounds persist for months or years (Krasner et al, 2014). Non-healing wounds may be a result of host factors, such as inadequate vasculature, medications that interfere with the healing process, immunocompromised status or critically-ill status with non-modifiable risk factors (terminal disease, end-stage organ failure and other life-threatening health conditions). Among patients who are dying, receiving hospice or palliative care, non-healing or palliative wounds can be associated with complications (Alvarez et al, 2016) [Box 1]. An inter-professional approach is required to meet whole-person care needs, especially for those with terminal illness, chronic debilitating diseases, advanced diseases associated with major organ failure (renal, hepatic, pulmonary or cardiac), profound dementia, complex psychosocial issues, diminished self-care abilities and challenging wound-related symptoms (Krasner and Stewart, 2015)

With the increased prevalence of chronic diseases, chronic non-healing wounds place a significant burden on the health system, individuals living with wounds, and their circle of care. The circle of care is a social term that includes all stakeholders in the patient's health and wellbeing (Krasner and Stewart, 2015). The term includes, but is not limited to, the patient, a legal guardian or responsible party, a spouse or significant other, interested friends or family members, caregivers, and any other individual(s) who may have an interest in the patient's care and wellbeing (Krasner and Stewart, 2015).

When caring for wounds that do not have

the potential for healing, the focus shifts from traditional wound care, where healing and wound closure are the goals, to promoting comfort and dignity, relieving suffering and improving quality of life (QoL) (Woo et al, 2015a). The care of individuals with chronic, non-healing wounds is complex and time-consuming, and is often complicated by the fragmentation of communication and services between acute, chronic and home care. A comprehensive framework for non-healing wound care necessitates inter-professional team involvement and multilevel interventions [Box 2] and [Figure 1]. When patient concerns are addressed by an inter-professional team, their QoL can be significantly improved (Woo et al, 2015b).

QoL and patient-oriented outcomes

While the usual outcome measure for wound care is time-to-healing (Moore et al, 2015), QoL is often more relevant for people with non-healable wounds. Generally, QoL is defined as a general perception of wellbeing, happiness and satisfaction by an individual. It is a subjective but dynamic concept influenced by functional capacity, past experiences, personality, self-esteem and interpersonal relationships (Woo et al, 2015a; Jørgensen et al, 2016). Health-related quality of life (HRQoL) refers to the sense of wellbeing that is specifically associated with health and illness, along with other related efforts to promote health, manage disease and prevent recurrence (Price, 2001). For example, one quality measure (goal) for the palliative patient with a sacral pressure injury would be to prevent wound infection. A HRQoL goal for

Kevin Woo is Associate Professor at the School of Nursing, Queen's University, Kingston, ON, Canada; Adjunct Research Professor, MCISC Program, School of Physical Therapy, Faculty of Health Sciences, Western University, London, ON, Canada; and Regional Director – North America, International Skin Tear Advisory Panel; **Vera Lúcia Conceição de Gouveia Santos** is Associate Professor, Nursing School of the University of São Paulo, Brazil; **Tarik Alam** is Adjunct Professor, Western University, London, Canada

Box 1. Complications associated with end-of-life condition

- ▶▶ Gangrene due to severe ischaemia or occlusive vasculopathy
- ▶▶ Malignant fungating wounds
- ▶▶ Kennedy terminal ulcers
- ▶▶ Skin failure
- ▶▶ Skin changes at life's end (SCALE) (Sibbald et al, 2009; Woo et al, 2014a).

Box 2. Multilevel interventions

- ▶▶ Biopsychosocial assessment to identify patient-oriented outcomes
- ▶▶ Strategies to communicate and empower the patient in self-management
- ▶▶ Health policy revision to enhance accessibility to appropriate resources
- ▶▶ Healthcare organisation remodelling to focus on issues pertinent to the patient's quality of life.

the same patient would be to reduce pain and prevent suffering. Striving for quality and HRQoL outcomes in patients with non-healing or palliative wounds is particularly significant when wound healing is not a realistic outcome.

The complexity of QoL is often understood and compartmentalised in terms of its multiple overlapping dimensions (e.g. biological and physiological factors, symptoms, functioning, general health perceptions and overall QoL). The different components may carry more importance at a given time based on the context of health and illness. There are a number of validated instruments to measure QoL in the general population [Box 3].

To examine the impact of chronic wounds on patients' HRQoL and their key concerns, disease-specific tools have been developed. Instruments designed for people with leg ulcers include: Hyland Leg and Foot Ulcer Questionnaire; Charing Cross Venous Leg Ulcer Questionnaire; and Sheffield Preference-based Venous Leg Ulcer 5D. For people with diabetic foot ulcers (DFUs) and related neuropathy, the Norfolk Quality of Life in Diabetes Peripheral Neuropathy Questionnaire, Neuro-QoL, the Manchester-Oxford Foot Questionnaire, DFU Scale and Cardiff Wound Impact Schedule (González-Consuegra and Verdú, 2011) have adequate validity and reliability. The Cardiff Wound Impact

Schedule has also been validated in measuring QoL in patients with pressure injuries and leg ulcers (Hogg et al, 2012; Hitzig et al, 2013; Ousey et al, 2014). The Ferrans and Powers Quality of Life Index – Wound Version was developed to evaluate QoL among patients with different acute and chronic wounds in Brazil (González-Consuegra and Verdú, 2011).

Chronic wound-related QoL framework

Common themes were identified from a literature review to create a framework for the concept of QoL in patients with chronic wounds [Figure 2]. To improve patients' QoL, this paradigm places greater emphasis on the need to foster a climate that elicits patient engagement accompanied by mindful scanning of the environment and health resource mapping (Yamada and Stantos, 2009) As each wound patient and his/her wound is unique, individualised wound care plans that address specific concerns, preferences and choices are most likely to succeed and promote the best outcomes; patients may be labelled 'non-compliant' when the real problem is that the care plan has not been properly individualised to their specific needs and perspectives on QoL. Assessment of patient needs and wound attributes will drive the identification of patient goals and desired outcomes through self-management support (education and interventions to increase patients' skills) (Barr et al, 2003). The overall goal of patient engagement and self-management is to foster self-efficacy and help patients master self-care skills and experience the best possible QoL (Barr et al, 2003; Diabetes Canada, 2015). There is no clinical practice guideline for the management of non-healing and palliative wounds, therefore, key concepts derived from the recent palliative literature and expert opinion (National Coalition for Hospice and Palliative Care, 2009; European Oncology Nursing Society, 2015) have been integrated in the following discussion.

Wound status and treatment

Even when best practice is implemented, some treatment options are not feasible and they do not always serve the best interests of patients. For example, a construction worker with a foot ulcer who cannot use a total contact cast because he needs to wear protective footwear at work; someone with a venous leg ulcer who prefers to shower every day during the hot and humid season but cannot do so because she needs to wear non-removable compression bandages; or an older person with

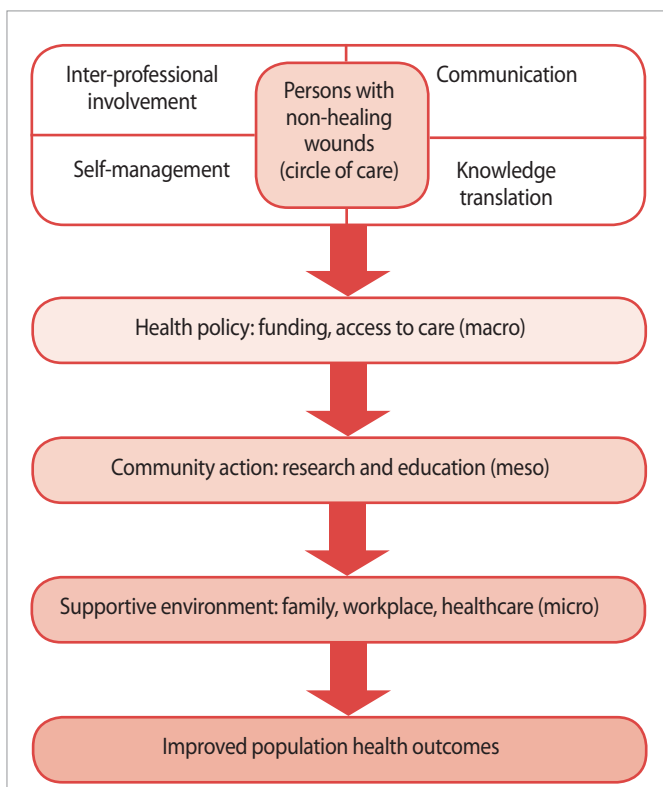


Figure 1. Healthcare organisation remodelling to improve patient quality of life (©Woo, 2013).

Box 3. Validated instruments to measure quality of life

- ▶▶ Medical Outcomes Study 36-item Short Form (SF-36) and adaptations
- ▶▶ Research and Development 36-item Form
- ▶▶ Sickness Impact Profile
- ▶▶ Quality of Life Ladder,
- ▶▶ Barthel Index
- ▶▶ Nottingham Health Profile
- ▶▶ Quality of Life Ladder
- ▶▶ EuroQol EQ-5D
- ▶▶ World Health Organization Quality of Life Questionnaire (WHOQoL 100 and short version)
- ▶▶ Ferrans and Powers Quality of Life Index.

a pressure ulcer who refuses an air fluidised mattress because she cannot get out of bed independently.

While turning patients every 2 hours has been recommended, repositioning can be uncomfortable, especially if patients also suffer from significant contractures, increased muscle spasticity and spasms. Among critically-ill individuals, repositioning may actually precipitate vascular instability or exacerbate shortness of breath, making this intervention intolerable (Langemo, 2012).

Adherence to compression among people with venous ulcers can be challenging if QoL issues have not been addressed properly. Miller and colleagues (2011) identified pain as a significant predictor of non-concordance with compression bandaging. Another example is negative pressure wound therapy, which may promote healing but can lead to poor QoL during initial treatment periods due to anxiety (Janssen et al, 2016). Other concerns, such as excessive warmth, pruritus and difficulty with putting on footwear, should also be discussed (Stansal et al, 2013).

Patients are entitled to a variety of treatment options and should be empowered to be active participants in care. This involves taking part in selecting the most appropriate treatment, monitoring responses and communicating concerns to healthcare providers. Patients and family need to understand that chronic wounds are largely preventable but not always avoidable (Sibbald et al, 2009). When circulation is diverted

from the skin to maintain haemodynamic stability and normal functioning of vital organs, for instance, skin damage is inevitable and unavoidable.

Symptoms

Chronic wound patients experience poor QoL, compromising their ability to work, carry out housework, perform personal hygiene activities and participate in social/recreational activities (Herber et al, 2007; Gorecki et al, 2009, 2010; González-Consuegra and Verdú, 2011). Pain is consistently identified as the most common and disabling symptom, leading to problems with mobility, sleep disorders and loss of employment. Other symptoms including pruritus, swelling, discharge and odour are equally distressing but are often overlooked by caregivers. Patients feel depressed, powerless, controlled by the ulcer and ashamed of their body.

HOPPES: symptom management

Clinical assessment of key symptoms should include HOPPES [Box 4].

Haemorrhage

Patients with malignant wounds are at risk of haemorrhage that can be very distressing. Granulation tissue within a malignant wound is often friable and bleeds easily because of local stimulation of vascular endothelial growth factor, resulting in the excess formation of abundant but fragile blood vessels (Woo et al, 2008). Reduced fibroblast activity and ongoing thrombosis of larger vessels in infected and malignant wounds may compromise the strength of collagen matrix formation, rendering the granulation less resilient to trauma (Charlesworth et al, 2014; Woo et al, 2009). Even minor trauma from the removal of wound dressings that adhere to the wound surface can provoke bleeding.

Light bleeding can be addressed with calcium alginate dressings; the calcium component triggers the coagulation cascade to facilitate haemostasis (Woo et al, 2014a). Alginates are derived from brown seaweed or kelp. Depending on the species and the origin of the calcium alginate (leaf or stem), they may have more gelling (high manuronic acid concentration) or higher fibre strength (high galuronic acid concentration). Alternative topical haemostatic agents are oxidised cellulose, topical thrombin and purified porcine skin gelatin (Wasilko et al, 2015). These agents can activate platelets, serve as a scaffold for clot

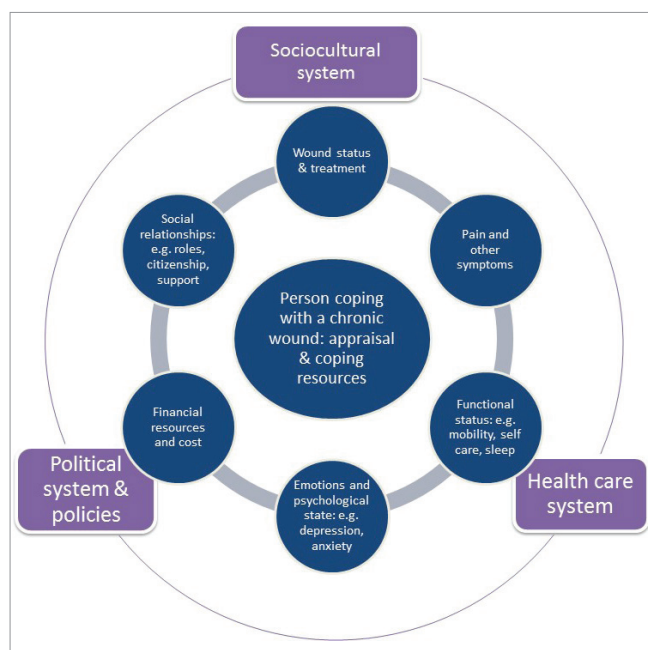


Figure 2. Chronic wound-related quality of life framework.

Box 4. HOPPEs symptom management

- » Haemorrhage (bleeding)
- » Odour
- » Pain
- » Pruritus
- » Exudate
- » Superficial biobrudden.

formation or expand to promote haemostasis through local pressure.

Catastrophic bleeding is rare but may occur when the tumour infiltrates into a major blood vessel. Other systemic factors that may precipitate haemorrhage are advanced hepatic diseases, thrombocytopenia, myelosuppressive effects of chemotherapy and radiotherapy, abnormal platelet function and clotting factors, coagulopathy and local infection.

To control profuse bleeding, suturing or cauterisation may be necessary. Adrenaline nasal sprays or soaked gauze (1 mg in 1 ml) can be applied topically as a compress with pressure for 10 minutes. Antifibrinolytic agents such as tranexamic acid or etamsylate, which promote plated adhesions, have also been recommended to prevent future bleeding (Alvarez et al, 2007; European Oncology Nursing Society, 2015).

Odour control

Odour was one of the most distressing symptoms for people with fungating breast wounds (Probst et al, 2013). Unpleasant odour and putrid discharge is associated with increased bacterial burden, particularly anaerobic and certain Gram-negative (e.g. *Pseudomonas*) organisms. Metabolic by-products that produce this odour include volatile fatty acids (propionic, butyric, valeric, isobutyric and isovaleric acids), volatile sulphur compounds, putrescine and cadaverine (Woo and Sibbald, 2009).

Topical treatments that have demonstrated efficacy in odour control (da Costa Santos et al, 2010; Lund-Nielsen et al, 2011; Kalemikerakis et al, 2012; de Castro and Stantos, 2015) are listed in [\[Box 5\]](#). Topical metronidazole manages odour by reducing anaerobic colonisation in wounds (da Costa Santos et al, 2010; de Castro and Santos, 2015). Although some studies had demonstrated promising findings for topical treatments, substantiating evidence is generally poor. In a survey of 1444 people from 36 countries, although charcoal and silver dressings were the most frequently used agents to control odour, less than half of respondents considered them to be effective (Gethin et al, 2014).

Following judicious deliberation, conservative debridement or desloughing may be appropriate. The goal of conservative debridement is to enhance QoL and decrease the risk of infection, not to facilitate healing.

Pain

Wound-associated pain is a common yet devastating symptom, often described as one of

the worst aspects of living with chronic wounds (Park et al, 2008). Sleep disturbance, immobility, poor appetite and depression are some of the consequences of unremitting pain (Woo, 2012). In an international survey of 2018 people with chronic wounds, over 60% of respondents reported the experience of pain 'quite often' or 'all the time' (Price et al, 2008). It should also be noted that pain can persist for 3 months or longer after wound closure (Memeth et al, 2004). In a prospective study about HRQoL predictors in patients with chronic wounds attending specialised wound, ostomy and continence centres, pain reduction was a predictor of clinical important change for overall QoL and almost all Ferrans and Powers Quality of Life Index – Wound Version domains (Oliviera et al, 2014).

Quirino and colleagues (2003) reported that 80% of pressure ulcer patients experienced moderate wound-related pain that was constant thorough the day, even at rest. The majority of people with venous leg ulcers also experienced moderate to severe levels of pain, described as aching, stabbing, sharp, tender and tiring (Nemeth et al, 2004). Severe pain is typically common among patients who are female, have a low income and have sustained leg ulcers for a prolonged duration of time (Gonçalves et al, 2004; Yamada and Santos, 2005).

Contrary to the commonly-held belief that most patients with DFUs do not experience pain due to neuropathy, up to 50% experience painful symptoms at rest and approximately 40% have moderate to extreme pain when climbing stairs or walking on uneven surfaces (Evans and Pinzur, 2005). Patients with diabetes who reported pain most or all of the time had statistically and clinically significantly poorer HRQoL than those who did not report pain (Goodridge et al, 2006). Pain in diabetes is often underestimated and undertreated.

Wound-related pain can be precipitated by repeated application and removal of adhesive tapes and dressings pulling the skin surface from the epithelial cells and stripping away the stratum corneum (Gorecki et al, 2010). Dressings with silicone adhesive are the least likely to cause maceration and skin damage with repeated application.

While moisture is essential to promote wound healing, wound fluid contains endogenous protein-degrading enzymes that are caustic and damaging to the intact skin. Periwound skin is particularly vulnerable to moisture-associated skin damage when the drainage volume exceeds the fluid-handling capacity of a dressing. A plethora of preparations can be used

Box 5. Topical odour-control treatments

- » Metronidazole
- » Polyhexanide agents
- » Curcumin ointment
- » Arsenic trioxide
- » Topical silver
- » Hydrogels
- » Antiseptic solutions
- » Debridement enzymes
- » Activated charcoal dressings
- » Hypertonic dressings
- » Hydropolymer dressings
- » Honey dressings
- » Essential oils
- » Green tea extract.

Box 6. Preparations to protect the periwound skin

- ▶▶ Cyanoacrylate formulations
- ▶▶ Petrolatum-based barrier ointments
- ▶▶ silicone-based barrier ointments
- ▶▶ Polymers that form a film on application through solvent evaporation.

to protect the periwound skin [Box 6]. These are available in a number of delivery systems, such as squeezable tubes, sprays, wipes and vials.

Pharmacotherapy continues to be the mainstay for pain management. Appropriate agents are selected based on severity and specific types of pain.

Pruritis

Pruritus is frequent complaint among people with chronic wounds; of 199 patients surveyed, 28.1% complained of itching (Paul et al, 2011). Peripheral pruritus is often triggered by pruritogens (e.g. histamine, serotonin, cytokines and opioids) giving rise to signals that are transmitted via pain-related neuronal pathways and terminate in the somatosensory cortex, where the sensation of itch is perceived (Woo and Sibbald, 2011). In patients with wounds, itching is commonly caused by peripheral stimulation of itch receptors due to irritation of the skin and related dermatitis (Woo and Sibbald, 2009).

People with chronic wounds are exposed to a plethora of potential contact irritants, accounting for approximately 80% of all cases of contact dermatitis. Excessive washing and bathing strips away surface lipid and induces dryness that can exacerbate pruritis. To replenish skin moisture, humectants or lubricants should be used on a regular basis. Drug treatment with paroxetine, a selective serotonin-reuptake inhibitor, and gabapentin has been shown to be beneficial in palliative care patients (Kelley and Morrison, 2015; Lilley et al, 2016).

Exudate management

Wound exudate contains endogenous protein-degrading enzymes, known as proteases or proteinases, which are corrosive and damaging to intact skin (Vowden et al, 2015). Maceration of the periwound skin typically presents as white, wrinkled soggy tissue at the wound edge.

High-volume and viscous exudate is often associated with unpleasant odour, painful periwound maceration, increased infection risk and exorbitant care costs due to frequent dressing changes. Leakage and/or strikethrough onto clothing, furniture and bed linen can lead to feelings of embarrassment and social isolation.

The major categories of dressings are foams, alginates, hydrofibres and super-absorbent dressings (Woo and Smith, 2014). Careful selection of discreet absorbent dressings (avoid bulky materials) will improve the patient's QoL.

Superficial infection

Complications such as wound infection are common but upsetting. According to analysis of a database comprising approximately 185,000 patients attending family medical practitioners in Wales, 60% of patients with chronic wounds had received at least one antibiotic in a 6-month period for the treatment of wound infection (Braga et al, 2013). Bacteria compete for nutrients and oxygen, which are essential for wound healing, and they stimulate overproduction of proteases, leading to degradation of extracellular matrix and growth factors (Woo et al, 2014b). In patients with DFUs, infection is a major risk factor that precedes amputation. The mortality rate has been reported to be over 50% in patients with bacteraemia secondary to uncontrolled infection in pressure ulcers (Crolla et al, 2012). Being diagnosed with an infection provokes anxiety; patients often fear infection is the beginning of a downward cycle leading to hospitalisation, limb amputation and death. The need to align expectations and dispel misconceptions cannot be underestimated.

As bacterial pathogens proliferate, they may form biofilms, which are encapsulated and protected against host defence and antimicrobial agents by extracellular polymeric substance (Fleming and Wingender, 2010). As many as 60% of chronic wounds contain biofilm (James et al, 2008). It is suspected that biofilm is the primary reason for excessive inflammatory damage in non-healing wounds and recurrent infection.

Clinical assessment is the first step to determine whether superficial or deep infection is a concern. There is no one particular sign or symptom that will accurately confirm the diagnosis of infection, but a combination of possible signs and symptoms should be sought for evaluation of bacterial damage in wounds. Based on review of the literature, the proposed wound infection checklist describes two clusters of signs and symptoms associated with superficial/localised wound infection versus deep soft tissue infection [Figure 3a&b] (Woo et al, 2014b). Immunocompromised patients may present with a wound that is not healing or worsening when infection is present as other signs and symptoms may be suppressed. Osteomyelitis should be suspected if ulcers probe to bone.

Emotional and psychological state Isolation and stigma

The bleak feeling of isolation due to wound-related stigma is a recurring theme in the

Acknowledgment

This article will be published in the forthcoming issue of *Wounds International* (2018): 9(3) (in press)

Wound Infection Checklist (UPPER)

Local / Superficial Infection - Treat with Topical Antimicrobials

U nhealthy tissue	Surface area on wound bed covered by devitalized tissue and unhealthy granulation tissue (thin and friable, bleeds easily, dark red, dull or dusky discoloration, overgranulation, pocketing, and bridging)
P oor healing	Stalled wound healing with no significant change in wound size or volume (approximately 10% in last 7 days)
P ain	New or increased pain
E xudate	Increased volume of exudate Change of consistency: viscous and thick exudate
R eek	Presence of foul odour

Local infection/increased bacterial burden should be suspected in the presence of 3 or more signs and symptoms.

© 2017 Woo K.

Figure 3(a). Signs and symptoms of local chronic wound infection: UPPER.

Wound Infection Checklist (LOWER)

Deep Infection - Treat Systemically +/- Topical Antimicrobials

L arger in size	Sudden or unexplained increase in wound size or new areas of satellite breakdown
O sseous tissue and/or deep structure	Wound that probes to bone or deep structures; crepitus may be present
W armth	Increased periwound temperature of more than 3° F compared to areas distant from the wound
E dema	Increased edema or induration around the wound
R edness	Redness of >2 cm beyond wound margin

Deep infection/increased bacterial burden should be suspected in the presence of 3 or more signs and symptoms.

© 2017 Woo K.
MRP # 0203178

References

1. Woo KY, Coutts PM, Sibbald RG. A randomized controlled trial to evaluate an antimicrobial dressing with silver alginate powder for the management of chronic wounds exhibiting signs of critical colonization. *Adv Skin Wound Care*. 2012;Nov;25(11):503-8.
2. Murphy, Christine Anne, "Evaluation and Treatment of Lower Extremity Wounds in a Vascular Surgery Patient Population" (2015). Electronic Thesis and Dissertation Repository. Paper 3351. <http://ir.lib.uwo.ca/etd/3351>

Figure 3(b). Signs and symptoms of deep chronic wound infection: LOWER.

literature. Stigma is often experienced by individuals with chronic and non-healing wounds (Corrigan et al, 2015). Patients are labelled as 'non-compliant' and blamed for allowing ulcers to develop due to their lack of self-control, will-power and competence to make healthy choices. Internalisation of stigma may lead to feelings of failure, embarrassment, disempowerment, low self-efficacy and fear of being judged, and prevent people from seeking help, discussing their difficulties openly and following treatment recommendations (Anderson and Funnell, 2000; Browne et al, 2013). The impact of self-stigma on people with chronic wounds and their abilities to participate in self-management remains under-recognised and under-explored. It is crucial this be addressed in this population to avoid the vicious cycle of self-stigma, demoralisation and stress.

Stress

Stress has a direct impact on QoL. People with chronic wounds tend to experience more emotional problems than people without wounds in the community, and are less capable of coping with stressful events (Woo, 2012). A survey of healthcare practitioners ($n=908$) acknowledged that mental health issues are common in people with chronic wounds (Upton et al, 2012). Over 60% of survey respondents indicated that between 25% and 50% of people with chronic wounds suffer from mental disorders. Anxiety was rated the most common symptom (81.5%), which is consistent with findings from a pilot study in which over 60% of people living with chronic wounds expressed higher than average anxiety (Upton et al, 2012).

While no one is immune to stress, the impact of a chronic wound on an individual's perception of well-being and QoL depends on personal meanings and values assigned to the demands that arise from living with a chronic wound. Coping is less adaptive or effective if people lack self-esteem, motivation and the conviction they have the aptitude to solve a problem. Woo (2011) evaluated the relationship between self-perception and emotional reaction to stress in people with chronic wounds and found people who are insecure about themselves tend to anticipate more wound-related pain and experience more anxiety.

Chronic stress is not innocuous. Stress activates the hypothalamic-pituitary-adrenal axis, leading to the production of adrenaline, noradrenalin, vasopressin and glucocorticoid (cortisol) (Woo, 2012). Noradrenalin induces vasoconstriction, which can potentially impair normal wound healing by compromising the delivery of oxygen and nutrients. Cortisol attenuates the immuno-inflammatory response to stress. Excessive cortisol suppresses cellular differentiation and proliferation, inhibits the regeneration of endothelial cells and delays collagen synthesis (Woo, 2012). The body of scientific evidence that substantiates the deleterious impact of protracted stress on wound healing is convincing (Woo, 2012). Ebrecht et al (2004) evaluated healing of acute wounds created by dermal biopsy among 24 healthy volunteers. Stress levels reported by the participants via the Perceived Stress Scale were negatively correlated to wound healing rates 7 days after the biopsy ($P<0.05$). Subjects exhibiting slow healing (below median healing rate) rated higher levels of stress during the study ($P<0.05$) and had higher cortisol levels 1 day after biopsy than the fast-healing group

($P<0.01$). Kiecolt-Glaser and colleagues (2005) compared wound healing in 13 older women (mean age 62.3 years) who were stressed from providing care for relatives with Alzheimer's disease with 13 age-matched controls (mean age 60.4 years). Time to complete wound closure was increased by 24% (or 9 days) in the stressed caregivers versus the controls ($P<0.05$).

Cognitive behavioural strategies and similar psychosocial interventions are designed to help people re-formulate their stress appraisal and regain a sense of control over their life's problem within an empathic and trusting milieu (National Coalition for Hospice and Palliative Care, 2009). Patients with severe functional impairment, social isolation, coping difficulties, and mood disorders may benefit from referral to specialists for psychotherapies.

Function

According to the International Classification of Functioning, Disability and Health (World Health Organization, 2018), disability refers to impairment, activity limitations and participation restrictions because of the interaction between a health condition and other physical, social, mental or emotional factors. The majority of patients with chronic wounds suffer mobility problems, and their ability to perform activities of daily living are limited. Activities often taken for granted by the general population, such as taking a shower, getting dressed and even walking up the stairs, can become an enormous challenge for people with chronic wounds.

Sociocultural impact

Embarrassment about odour, fluid leakage from wounds and their bodies may lead people with chronic wounds to intentionally avoid social contact and activities. Patients often feel detached and emotionally distant from their friends and families, rendering it difficult to maintain meaningful friendships and romantic relationships. Patients with chronic wounds are frequently isolated and lack social support.

The concept of social support refers to an interactive process that entails perceived availability of help or support actually received. In a study of 67 patients with venous leg ulcers, Edwards and co-investigators (2009) evaluated the impact of a community model of care on QoL. Subjects were randomised to receive individual home visits from community nurses (the control group) or to pay a weekly visit to a nurse-managed Leg Club™ (the intervention group). Participants were able to obtain advice/

information on managing their ulcers through social interaction with expert nurses and peers at Leg Club. Attendance at Leg Club was associated with significant improvement in QoL ($P<0.014$), morale ($p<0.001$), self-esteem ($P=0.006$), pain ($P=0.003$) and functional ability ($P=0.004$). Wound care patients who are affiliated with a religion are also more likely to experience improved QoL (Yamada and Santos, 2005; Yamada et al, 2014).

Financial impact

Patients with chronic wounds are often unemployed, marginalised and isolated. In a study of 21 patients with DFUs, 79% of patients reported an inability to maintain employment secondary to decreased mobility and fear of someone inadvertently stepping on their affected foot (Kinmond et al, 2003). In another study, all patients interviewed felt that the leg ulcer limited their work capacity, with 50% adding that their jobs required them to stand for most of their shift. In that same study, 42% of patients identified the leg ulcer as a key factor in their decision to stop working (Herber et al, 2007). Even for younger patients, leg ulceration was correlated with time lost from work and job loss, ultimately affecting finances (Herber et al, 2007).

Beyond occupational stressors and dilemmas, patients may incur additional out-of-pocket expenses for transportation, parking, telephone bills for medical follow-up, home health aide services, dressing supplies not covered by insurance, and drug costs if they have no prescription plan.

Health care system

Navigating through the healthcare system can be extremely confusing. A trusting and therapeutic relationship between patients and their healthcare providers may serve to buffer the effects of adversity and stress. However, patients sometimes feel rushed during routine wound care clinic visits. It is important to patients that healthcare providers care and display a genuine interest in patient wellbeing (Alvarez et al, 2007). In their description of the key attributes of someone who cares, patients use terms like 'caring', 'holistic', 'friendly', being 'vigilant', 'cheerful', 'gentle' and 'knowledgeable'. Healthcare providers should provide clear and consistent communication to avoid confusion. In a prospective study, patients attending specialised wound care clinics reported improvement of HRQoL over time (Oliviera et al, 2014).

Conclusion

Inter-professional palliative wound care with goals and outcome measures targeted to the individual with a non-healing or palliative wound can improve QoL and HRQoL. The management strategies detailed in this article are the starting point for an individualised plan of care. When QoL and HRQoL drive the plan of care, non-healing and palliative wound care outcomes are optimised. **WAS**

References

- Adderley UJ, Holt IG (2014) Topical agents and dressings for fungating wounds. *Cochrane Database Syst Rev* (5): CD003948
- Alvarez OM, Kalinski C, Nusbaum J et al (2007) Incorporating wound healing strategies to improve palliation (symptom management) in patients with chronic wounds. *J Palliat Med* 10(5):1161–89
- Alvarez OM, Brindle CT, Langemo D et al (2016) The search for a clearer understanding and more precise clinical definition of the unavoidable pressure injury. *J Wound Ostomy Continence Nurs* 43(5): 455–63
- Anderson RM, Funnell MM (2000) Compliance and adherence are dysfunctional concepts in diabetes care. *Diabetes Educ* 26(4): 597–604
- Barr VJ, Robinson S, Marin-Link B et al (2003) The expanded chronic care model: an integration of concepts and strategies from population health promotion and the chronic care model. *Hosp Q* 7(1):73–80
- Braga IA, Pirett CC, Ribas RM et al (2013) Bacterial colonization of pressure ulcers: assessment of risk for bloodstream infection and impact on patient outcomes. *J Hosp Infect* 83(4): 314–20
- Browne JL, Ventura A, Mosely K, Speight J (2013) 'I call it the blame and shame disease': a qualitative study about perceptions of social stigma surrounding type 2 diabetes. *BMJ Open* 3(11): e003384
- Charlesworth B, Pilling C, Chadwick P, Butcher M (2014) Dressing-related trauma: clinical sequelae and resource utilization in a UK setting. *Clinicoecon Outcomes Res* 6: 227–39
- Corrigan PW, Bink AB, Schmidt A et al (2015) What is the impact of self-stigma? Loss of self-respect and the "why try" effect. *Diabetes Educ* 41(1): 86–94
- Crolla RM, van der Laan L, Veen EJ et al (2012) Reduction of surgical site infections after implementation of a bundle of care. *PLoS One* 7(9): e44599
- da Costa Santos CM, de Mattos Pimenta CA, Nobre MR (2010) A systematic review of topical treatments to control the odor of malignant fungating wounds. *J Pain Symptom Manage* 39(6): 1065–76
- de Castro DLV, Santos VLCCG (2015) Odor management in fungating wounds with metronidazole. *J Hospice Palliat Nurs* 17(1): 73–9
- Diabetes Canada (2015) *2015 Report on Diabetes: Driving Change*. Diabetes Canada, Toronto, Ont. Available at: <https://bit.ly/1QdttCs> (accessed 08.08.2018)
- Ebrecht M, Hextall JK, Kirtley LG et al (2004) Perceived stress and cortisol levels predict speed of wound healing in healthy male adults. *Psychoneuroendocrinology* 29(6): 798–809
- Edwards H, Courtney M, Finlayson K (2009) A randomized controlled trial of a community nursing intervention: improved quality of life and healing for clients with chronic leg ulcers. *J Clin Nurs* 18(11): 1541–9
- European Oncology Nursing Society (2015) *EONS Recommendations for the Care of Patients with Malignant Fungating Wounds*. European Oncology Nursing Society, London. Available at: www.cancernurse.eu/documents/EONSMalignantFungatingWounds.pdf (accessed 30 July 2018)
- Evans AR, Pinzur MS (2005) Health-related quality of life of patients with diabetes and foot ulcers. *Foot Ankle Int* 26(1): 32–7
- Gethin G, Grocott P, Probst S, Clarke E (2014) Current practice in the management of wound odour: an international survey. *Int J Nurs Stud* 51(6): 865–74
- Fleming HC, Wingender J (2010) The biofilm matrix. *Nat Rev Microbiol* 8(9): 623–33
- Goodridge D, Trepman E, Sloan J et al (2006) Quality of life of adults with unhealed and healed diabetic foot ulcers. *Foot Ankle Int* 27(4): 274–80
- Gonçalves ML, Santos VLCCG, Pimenta CAM et al (2004) Pain in chronic leg ulcers. *J Wound Ostomy Continence Nurs* 31(5): 275–83
- González-Consuegra RV, Verdú J (2011) Quality of life in people with venous leg ulcers: an integrative review. *J Adv Nurs* 67(5): 926–44
- Gorecki C, Brown JM, Nelson EA et al; European Quality of Life Pressure Ulcer Project group. Impact of pressure ulcers on quality of life in older patients: a systematic review. *J Am Geriatr Soc* 57(7): 1175–83
- Gorecki C, Lamping DL, Brown JM et al (2010) Development of a conceptual framework of health-related quality of life in pressure ulcers: a patient-focused approach. *Int J Nurs Stud* 47(12): 1525–34
- Herber OR, Schnepf W, Rieger MA (2007) A systematic review on the impact of leg ulceration on patients' quality of life. *Health Qual Life Outcomes* 5: 44
- Hitzig SL, Balioussis C, Nussbaum E et al (2013) Identifying and classifying quality-of-life tools for assessing pressure ulcers after spinal cord injury. *J Spinal Cord Med* 36(6): 600–15
- Hogg FRA, Peach G, Price G et al (2012) Measures of health-related quality of life in diabetes-related foot disease: a systematic review. *Diabetologia* 55(3): 552–65
- James GA, Swogger E, Wolcott R et al (2008) Biofilms in chronic wounds. *Wound Repair Regen* 16(1): 37–44
- Janssen AH, Mommers EH, Notter J et al (2016) Negative pressure wound therapy versus standard wound care on quality of life: a systematic review. *J Wound Care* 25(3): 154, 156–9
- Jørgensen LB, Sørensen JA, Jemec GB, Yderstraede KB (2016) Methods to assess area and volume of wounds – a systematic review. *Int Wound J* 13(4): 540–53
- Kalemikerakis J, Vardaki Z, Fouka G, et al (2012) Comparison of foam dressings with silver versus foam dressings without silver in the care of malodorous malignant fungating wounds. *J BUON* 17(3): 560–4
- Kelley AS, Morrison RS (2015) Palliative care for the seriously ill. *N Engl J Med* 373(8): 747–55
- Kiecolt-Glaser JK, Loving TJ, Stowell JR et al (2005) Hostile marital interactions, proinflammatory cytokine production, and wound healing. *Arch Gen Psychiatry* 62(12): 1377–84

- Kinmond K, McGee P, Gough S, Ashford R (2003) 'Loss of self': a psychosocial study of the quality of life of adults with diabetic foot ulceration. *J Tissue Viability* 13(2): 6–16
- Krasner DL, Rodeheaver GT, Sibbald RG, Woo KY (2014) International interprofessional wound caring. In: Krasner DL, ed. *Chronic Wound Care: The Essentials*. HMP Communications, Malvern, PA: 7–16
- Krasner DL, Stewart TP (2015) SCALE wounds: unavoidable pressure injury. *Wounds* 27(4): 92–4
- Langemo D (2012) General principles and approaches to wound prevention and care at end of life: an overview. *Ostomy Wound Manage* 58(5): 24–26, 28, 30
- Lilley EJ, Khan KT, Johnston FM (2016) Palliative care interventions for surgical patients: a systematic review. *JAMA Surg* 151(2): 172–83
- Lund-Nielsen B, Adamsen L, Kolmos HJ et al (2011) The effect of honey-coated bandages compared with silver-coated bandages on treatment of malignant wounds – a randomized study. *Wound Repair Regen* 19(6): 664–70
- Miller C, Kapp S, Newall N et al (2011) Predicting concordance with multilayer compression bandaging. *J Wound Care* 20(3): 101–2, 104, 106
- Moore ZE, Webster J, Samuriwo R (2015) Wound-care teams for preventing and treating pressure ulcers. *Cochrane Database Syst Rev* (9): CD011011
- National Coalition for Hospice and Palliative Care (2009) *Clinical Practice Guidelines for Quality Palliative Care*. 2nd edn. National Consensus Project for Quality Palliative Care, Pittsburgh, PA
- Nemeth KA, Harrison MB, Graham ID, Burke S (2004) Understanding venous leg ulcer pain: results of a longitudinal study. *Ostomy Wound Manage* 50(1): 34–6
- Oliveira AS, de Gouveia Santos VLC, Amaral AFS et al (2014) Predictors of quality of life of people with chronic wounds. *J Wound Ostomy Continence Nurs* 41(suppl): 7–8
- Ousey KJ, Milne J, Cook L (2014) A pilot study exploring quality of life experienced by patients undergoing negative-pressure wound therapy as part of their wound care treatment compared to patients receiving standard wound care. *Int Wound J* 11(4): 357–65
- Park SH, Ferreira KASL, Santos VLCG (2008) Understanding pain and quality of life for patients with chronic venous ulcers. *Wounds* 20(11): 309–11
- Paul JC, Pieper B, Templin TN (2011) Itch: association with chronic venous disease, pain, and quality of life. *J Wound Ostomy Continence Nurs* 38(1): 46–54
- Price P (2001) Quality of life. In: Krasner DL. *Chronic Wound Care: A Clinical Source Book for Health Care Professionals*. 3rd edn. HMP Communications, Wayne, PA
- Price PE, Fagervik-Morton H, Mudge EJ et al (2008) Dressing-related pain in patients with chronic wounds: an international patient perspective. *Int Wound J* 5(2): 159–71
- Price P, Krasner DL (2012) Health-related quality of life and chronic wounds: evidence and implications for practice. In: Krasner DL, Rodeheaver DTM, Sibbald RG, Woo KY, eds. *Chronic Wound Care: A Clinical Source book for Healthcare Professionals*. Vol 1. 5th edn. HMP Communications, Malvern, PA: 77–84
- Probst S, Arber A, Faithfull S (2013) Malignant fungating wounds: the meaning of living in an unbounded body. *Eur J Oncol Nurs* 17(1): 38–45
- Quirino J, Santos VLCG, Quednau TJP et al (2003) Pain in pressure ulcers. *Wounds. A Compendium of Clinical Research and Practice* 15(12): 381–9
- Sibbald RG, Krasner DL, Lutz JB, et al; the SCALE Expert Panel (2009) *SCALE Skin Changes At Life's End*. Final Consensus Document. Available at: www.epuap.org/wp-content/uploads/2012/07/SCALE-Final-Version-2009.pdf (accessed 30 July 2018)
- Stansal A, Lazareth I, Michon Pasturel U et al (2013) Compression therapy in 100 consecutive patients with venous leg ulcers. *J Mal Vasc* 38(4): 252–8
- Upton D, Solowiej K, Hender C, Woo KY (2012) Stress and pain associated with dressing change in patients with chronic wounds. *J Wound Care* 21(2): 53–61
- Vowden P, Bond D, Meuleneire F (2015) Managing high viscosity exudate. *Wounds International* 6(1): 1–4. Available at: www.woundsinternational.com (accessed 30 July 2018)
- Wasilko SM, Quinlan NJ, Shafritz AB (2015) Topical hemostatic agents and their role in upper extremity surgery. *J Hand Surg Am* 40(3): 602–4
- Woo KY (2011) *Wound Related Pain and Attachment in the Older Adults*. LAP Lambert Academic Publishing
- Woo K (2012) Chronic wound-associated pain, psychological stress, and wound healing. *Surg Technol Int* 22: 57–65
- Woo KY, Sibbald RG (2009) The ABCs of skin care for wound care clinicians: dermatitis and eczema. *Adv Skin Wound Care* 22(5): 230–6
- Woo KY, Sibbald RG (2011) Local wound care for palliative and malignant wounds. In: Emanuel LL, Librach SL, eds. *Palliative Care: Core Skills and Clinical Competencies*. 2nd edn. Elsevier, St Louis, MO: 223–41
- Woo KY, Harding K, Price P, Sibbald RG (2008) Minimising wound-related pain at dressing change: evidence-informed practice. *Int Wound J* 5(2): 144–57
- Woo KY, Coutts PM, Price P et al (2009) A randomized cross over investigation of pain at dressing change comparing 2 foam dressings. *Adv Skin Wound Care* 22(7): 304–10
- Woo KY, Krasner DL, Sibbald RG (2014a) Palliative wound care and treatment at end of life. In: Thomas DR, Compton G, eds. *Pressure Ulcers in the Aging Population: A Guide for Clinicians. Aging Medicine Series*. Humana Press – Springer, New York, NY
- Woo KY, Alam T, Marin J (2014b) Topical antimicrobial toolkit for wound infection. *Surg Technol Int* 25: 45–52
- Woo KY, Krasner DL, Kennedy B et al (2015a) Palliative wound care management strategies for palliative patients and their circles of care. *Adv Skin Wound Care* 28(3): 130–40
- Woo KY, VanDenKerkhof E, Jimenez C (2015b) Quality of life and chronic wound care. In: Baranoski S, Ayello EA, eds. *Wound Care Essentials: Practice Principles*. 4th edn. Lippincott Williams & Wilkins, Philadelphia, PA
- World Health Organization (2018) Fact sheet: Disability and health. Available at: www.who.int/mediacentre/factsheets/fs352/en/ (accessed 30 July 2018)
- Yamada BFA, Santos VLCG (2009) Development and validation of Ferrans & Powers Quality of Life Index – wound version. *Journal of São Paulo University School of Nursing* 43: 1105–13
- Yamada BFA, Santos VLCG (2005) Quality of life of individuals with chronic venous ulcers. *Wounds* 17(7): 178–89
- Yamada BFA, de Gouveia Santos VLC, Serna CVG et al (2014) Comparative study of the quality of life between people with vasculogenic ulcers and the general population. *J Wound Ostomy Continence Nurs* 41: 89–9